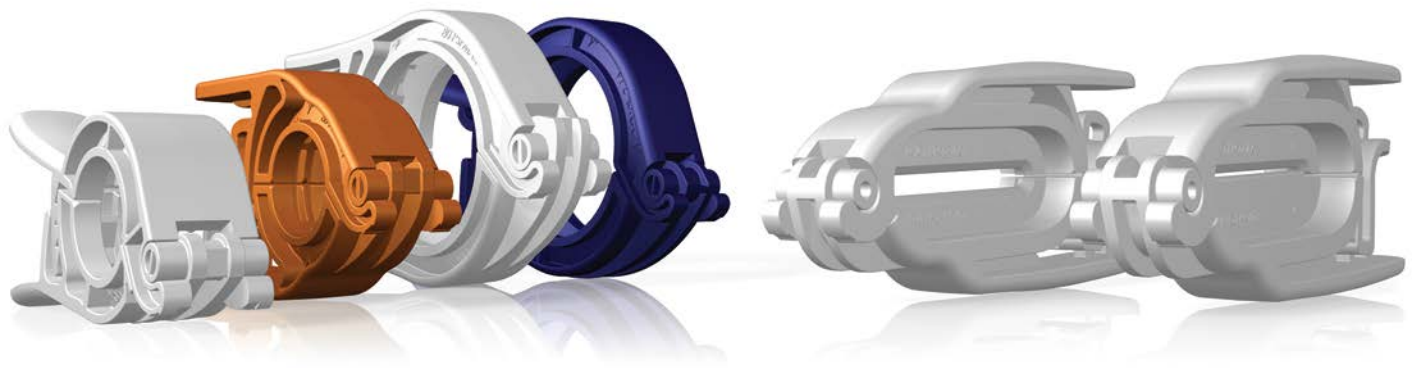


## State-of-the-Art Design Allowing for Easy Operation

The biopharmaceutical industry has made a strong move towards single-use technology, so Nordson MEDICAL has developed ground-breaking clamp designs that simplify the assembly process. Effortlessly and securely attach sanitary fittings to bag ports and filters with PharmaLok™ Easy-Open Clamps, and close off flow with PharmaLok™ Tube Clamps.



### Single-Use Clamps & Easy-Open Clamps Features & Benefits

- ASME BPE 2016 DT-7-1 compliant & DIN compliant
- Easy to use, one-handed closure - no tools needed
- Repeatability with constantly equal pressure on the gasket
- Tamper evident & zip tie compatible
- 360° compression
- Connects both plastic and stainless steel fittings
- SIP/CIP compatible

### Specifications

- **Materials:**  
Zytel® FGFE5171 glass-filled nylon certified to USP Class VI & ISO 10993 and available in white, blue, or orange
- **Temperature & Sterilization Specifications:**  
Normal operating temperature -94° F (-70° C) to 140° F (60° C)  
Cryogenic freezing to -112° F (-80° C)  
Autoclavable up to 273° F (134° C) for a maximum of 30 min.  
Gamma radiation up to 50 kGy
- **Maximum Pressure:**  
80 psi (conforms to ASME BPE-2014 PM-4.2.2)
- **Sizes:**  
.5" to .75" and 1" to 1.5"

### Tube Clamps Features & Benefits

- Designed for use with silicone & TPE tubing
- Easy to use, one-handed closure - no tools needed
- Tamper evident & zip tie compatible
- Thin wall tube clamp works with smaller ID tubing sizes

### Specifications

- **Materials:**  
Zytel® FGFE5171 glass-filled nylon certified to USP Class VI & ISO 10993 and available in white
- **Temperature & Sterilization Specifications:**  
Normal operating temperature -94° F (-70° C) to 140° F (60° C)  
Cryogenic freezing to -112° F (-80° C)  
Autoclavable up to 273° F (134° C) for a maximum of 30 min.  
Gamma radiation up to 50 kGy
- **Maximum Pressure:**  
Up to 150 psi
- **Sizes:**  
.25" to .625" and .5" to 1.25" tubing ID

## Easy-Open Clamps



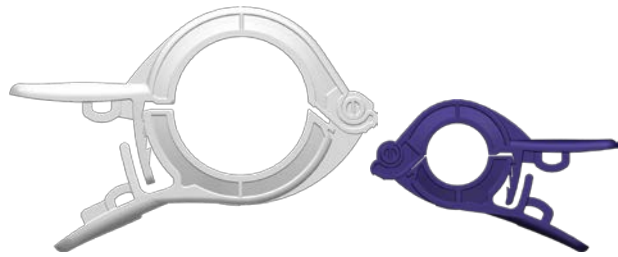
### CPAX150 (-U71, -U75, -U706)

Tri-Clover Easy-Open Clamp for Maxi Flange, 1" to 1.5", Glass-Reinforced White, Blue, or Orange Nylon

### CPAN75 (-U71, -U75, -U706)

Tri-Clover Easy-Open Clamp for Mini Flange, .5" to .75", Glass-Reinforced White, Blue, or Orange Nylon

## Single-Use Clamps



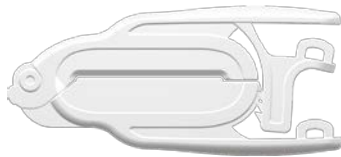
### CPX150 (-U71, -U75)

Single-Use Series Clamp, TC Version 1" to 1.5", Glass-Reinforced White or Blue Nylon

### CPN75 (-U71, -U75)

Single-Use Series Clamp, TC Version .5" to .75", Glass-Reinforced White or Blue Nylon

## Tube Clamps

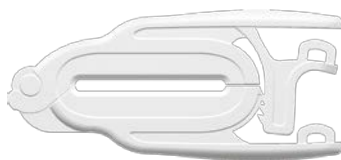


### CPT90 (-U71)

Tube Clamp, .25" to .625" Tube ID, Glass-Reinforced White Nylon

### Silicone and TPE Tubing Compatibility

Tubing ID	1/16"	1/16"	1/8"	3/16"	3/16"	1/4"	1/4"	5/16"	5/16"	3/8"	3/8"	7/16"	1/2"	1/2"	5/8"	5/8"
Tubing OD	1/8"	3/16"	1/4"	5/32"	3/8"	3/8"	7/16"	7/16"	1/2"	1/2"	9/16"	5/8"	5/8"	11/16"	3/4"	13/16"
Wall	1/32"	1/16"	1/16"	1/16"	3/32"	1/16"	3/32"	1/6"	3/32"	1/16"	3/32"	3/32"	1/16"	3/32"	1/16"	3/32"



### CPT100 (-U71)

Tube Clamp, .5" to 1.25" Tube ID, Glass-Reinforced White Nylon

### Silicone and TPE Tubing Compatibility

Tubing ID	Tubing OD						
	5/8"	3/4"	7/8"	1"	1-1/8"	1-1/4"	1-1/2"
1/2"	No	Yes	—	—	—	—	—
5/8"	—	No	Yes	Yes	—	—	—
3/4"	—	—	—	Yes	Yes	—	—
1"	—	—	—	—	—	Yes	Yes

— Tubing size not available

### Reinforced Silicone and TPE Tubing Compatibility

Tubing ID	Tubing OD				
	7/8"	1"	1-1/8"	1-1/4"	1-3/8"
1/2"	Yes	—	—	—	—
5/8"	—	Yes	—	—	—
3/4"	—	—	Yes	—	—
7/8"	—	—	—	Yes	—
1"	—	—	—	—	Yes

Authorized European Partner:

**MEDNET**

Borkstrasse 10  
48163 Münster / Germany  
Tel. +49 251 32266-0  
info@medneteuropa.com  
www.medneteuropa.com

**Nordson**  
MEDICAL

BioClamp® plastic quick-release clamps are specifically designed to meet the needs of busy pharmaceutical and bioprocessing laboratories, offering full flexibility in Single-Use applications. The clamps are specifically designed to work with Nordson MEDICAL's SF Series sanitary fitting Mini and Maxi flanges, related caps and gaskets, and in conjunction with OEM filters and bioprocessing bags. The clamp is lightweight and easy for technicians to install and provides for quick and convenient assembly release.



### Clamp and Valve Common Features

- Can be SIP repeatedly
- Can be autoclaved repeatedly at 134°C for 5 minutes
- Can be subjected to 60 kiloGrays without detectable weakening

### Applications

- Bioprocessing
- Single-Use Technology (SUS)
- Drug discovery and development
- Fluid transport
- Pharmaceutical scale up
- Sterile bag systems

## FEATURES

Reduced distortion on polymeric components when subjected to heat

More compatible with current Pharmaceutical and Biotech manufacturing than stainless steel

- Greater flexibility in operation
- Single-Use disposal

## SPECIFICATIONS

Materials: Glass reinforced Nylon 66

Tubing Sizes: 1/2" to 1 1/2"

Max. Operating Pressure: 150 psig

Max. Cumulative Gamma Dose: 60 kiloGrays

USP Class VI Certified Materials