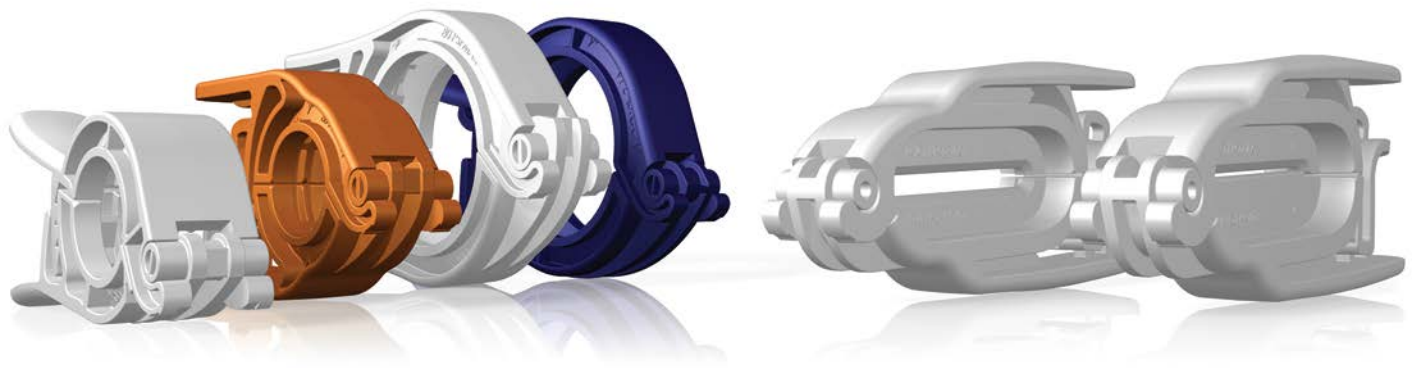


State-of-the-Art Design Allowing for Easy Operation

The biopharmaceutical industry has made a strong move towards single-use technology, so Nordson MEDICAL has developed ground-breaking clamp designs that simplify the assembly process. Effortlessly and securely attach sanitary fittings to bag ports and filters with PharmaLok™ Easy-Open Clamps, and close off flow with PharmaLok™ Tube Clamps.



Single-Use Clamps & Easy-Open Clamps Features & Benefits

- ASME BPE 2016 DT-7-1 compliant & DIN compliant
- Easy to use, one-handed closure - no tools needed
- Repeatability with constantly equal pressure on the gasket
- Tamper evident & zip tie compatible
- 360° compression
- Connects both plastic and stainless steel fittings
- SIP/CIP compatible

Specifications

- **Materials:**
Zytel® FGFE5171 glass-filled nylon certified to USP Class VI & ISO 10993 and available in white, blue, or orange
- **Temperature & Sterilization Specifications:**
Normal operating temperature -94° F (-70° C) to 140° F (60° C)
Cryogenic freezing to -112° F (-80° C)
Autoclavable up to 273° F (134° C) for a maximum of 30 min.
Gamma radiation up to 50 kGy
- **Maximum Pressure:**
80 psi (conforms to ASME BPE-2014 PM-4.2.2)
- **Sizes:**
.5" to .75" and 1" to 1.5"

Tube Clamps Features & Benefits

- Designed for use with silicone & TPE tubing
- Easy to use, one-handed closure - no tools needed
- Tamper evident & zip tie compatible
- Thin wall tube clamp works with smaller ID tubing sizes

Specifications

- **Materials:**
Zytel® FGFE5171 glass-filled nylon certified to USP Class VI & ISO 10993 and available in white
- **Temperature & Sterilization Specifications:**
Normal operating temperature -94° F (-70° C) to 140° F (60° C)
Cryogenic freezing to -112° F (-80° C)
Autoclavable up to 273° F (134° C) for a maximum of 30 min.
Gamma radiation up to 50 kGy
- **Maximum Pressure:**
Up to 150 psi
- **Sizes:**
.25" to .625" and .5" to 1.25" tubing ID

Easy-Open Clamps



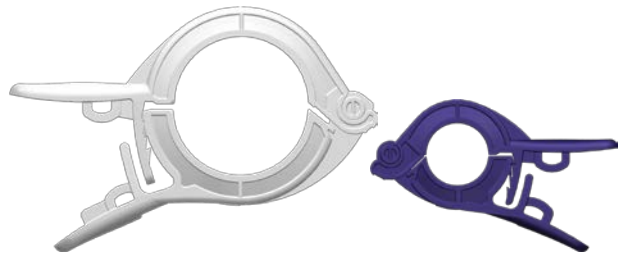
CPAX150 (-U71, -U75, -U706)

Tri-Clover Easy-Open Clamp for Maxi Flange, 1" to 1.5", Glass-Reinforced White, Blue, or Orange Nylon

CPAN75 (-U71, -U75, -U706)

Tri-Clover Easy-Open Clamp for Mini Flange, .5" to .75", Glass-Reinforced White, Blue, or Orange Nylon

Single-Use Clamps



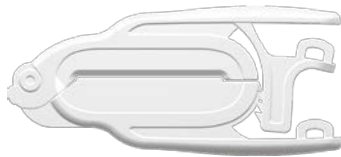
CPX150 (-U71, -U75)

Single-Use Series Clamp, TC Version 1" to 1.5", Glass-Reinforced White or Blue Nylon

CPN75 (-U71, -U75)

Single-Use Series Clamp, TC Version .5" to .75", Glass-Reinforced White or Blue Nylon

Tube Clamps

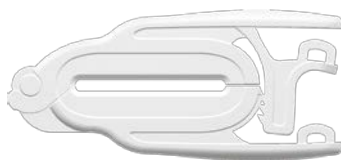


CPT90 (-U71)

Tube Clamp, .25" to .625" Tube ID, Glass-Reinforced White Nylon

Silicone and TPE Tubing Compatibility

Tubing ID	1/16"	1/16"	1/8"	3/16"	3/16"	1/4"	1/4"	5/16"	5/16"	3/8"	3/8"	7/16"	1/2"	1/2"	5/8"	5/8"
Tubing OD	1/8"	3/16"	1/4"	5/32"	3/8"	3/8"	7/16"	7/16"	1/2"	1/2"	9/16"	5/8"	5/8"	11/16"	3/4"	13/16"
Wall	1/32"	1/16"	1/16"	1/16"	3/32"	1/16"	3/32"	1/6"	3/32"	1/16"	3/32"	3/32"	1/16"	3/32"	1/16"	3/32"



CPT100 (-U71)

Tube Clamp, .5" to 1.25" Tube ID, Glass-Reinforced White Nylon

Silicone and TPE Tubing Compatibility

Tubing ID	Tubing OD						
	5/8"	3/4"	7/8"	1"	1-1/8"	1-1/4"	1-1/2"
1/2"	No	Yes	—	—	—	—	—
5/8"	—	No	Yes	Yes	—	—	—
3/4"	—	—	—	Yes	Yes	—	—
1"	—	—	—	—	—	Yes	Yes

— Tubing size not available

Reinforced Silicone and TPE Tubing Compatibility

Tubing ID	Tubing OD				
	7/8"	1"	1-1/8"	1-1/4"	1-3/8"
1/2"	Yes	—	—	—	—
5/8"	—	Yes	—	—	—
3/4"	—	—	Yes	—	—
7/8"	—	—	—	Yes	—
1"	—	—	—	—	Yes

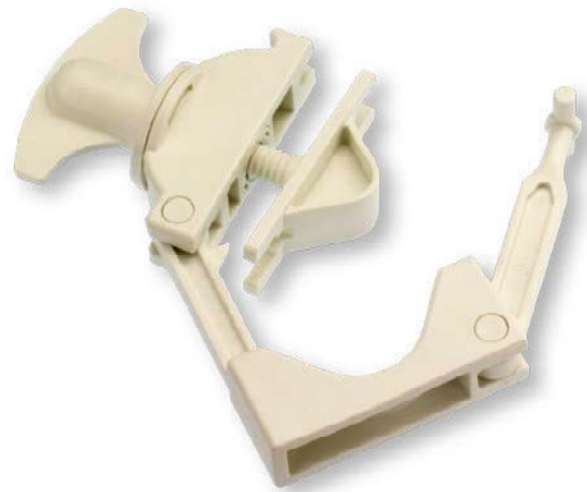
Authorized European Partner:

MEDNET

Borkstrasse 10
48163 Münster / Germany
Tel. +49 251 32266-0
info@medneteuropa.com
www.medneteuropa.com

Nordson
MEDICAL

The BioValve® pinch valve is a precision restriction flow controller and shut-off valve for silicone tubing used in bioprocessing and pharmaceutical manufacturing applications. BioValve products offer full flexibility in Single-Use applications. It can be installed over most common silicone tubing.



Clamp and Valve Common Features

- Can be SIP repeatedly
- Can be autoclaved repeatedly at 134°C for 5 minutes
- Can be subjected to 60 kiloGrays without detectable weakening

Applications

- Bioprocessing
- Single-Use Technology (SUS)
- Drug discovery and development
- Fluid transport
- Pharmaceutical scale up
- Sterile bag systems

FEATURES

Can be calibrated to minimize flow path turbulence

Can be used one handed

Thread pitch is calibrated to 2mm per turn, permitting accurate estimation of flow restriction

SPECIFICATIONS

Materials: Glass reinforced Nylon 66

Tubing Sizes: 1/4" to 1"

Max. Operating Pressure: 150 psig

Max. Cumulative Gamma Dose: 60 kiloGrays

USP Class VI Certified Materials